

Bridging the Tech Gap: How facilities and property management roles are evolving



Hello!



Scott Revell

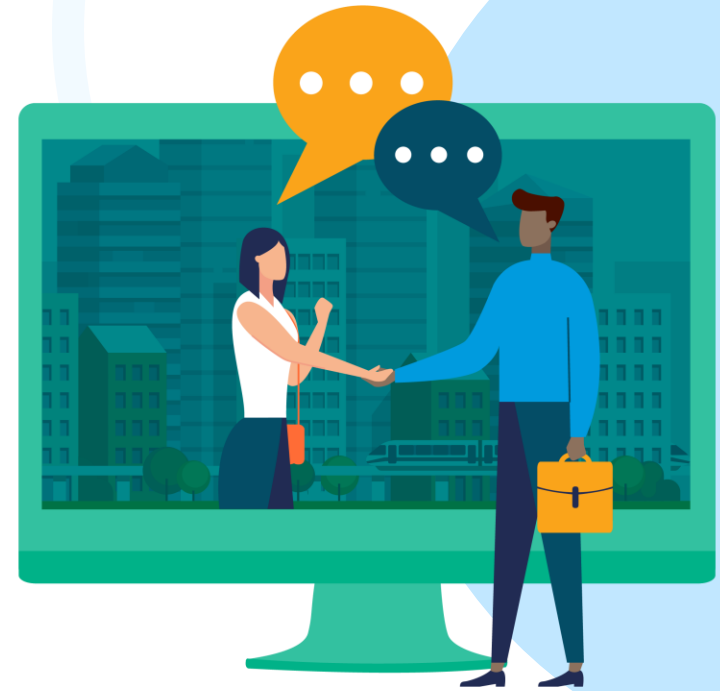
Account Executive

scott.revell@mrisoftware.com

Expertise: Property Investment, Property Management,
Property Development, Lease Admin, Property Finance

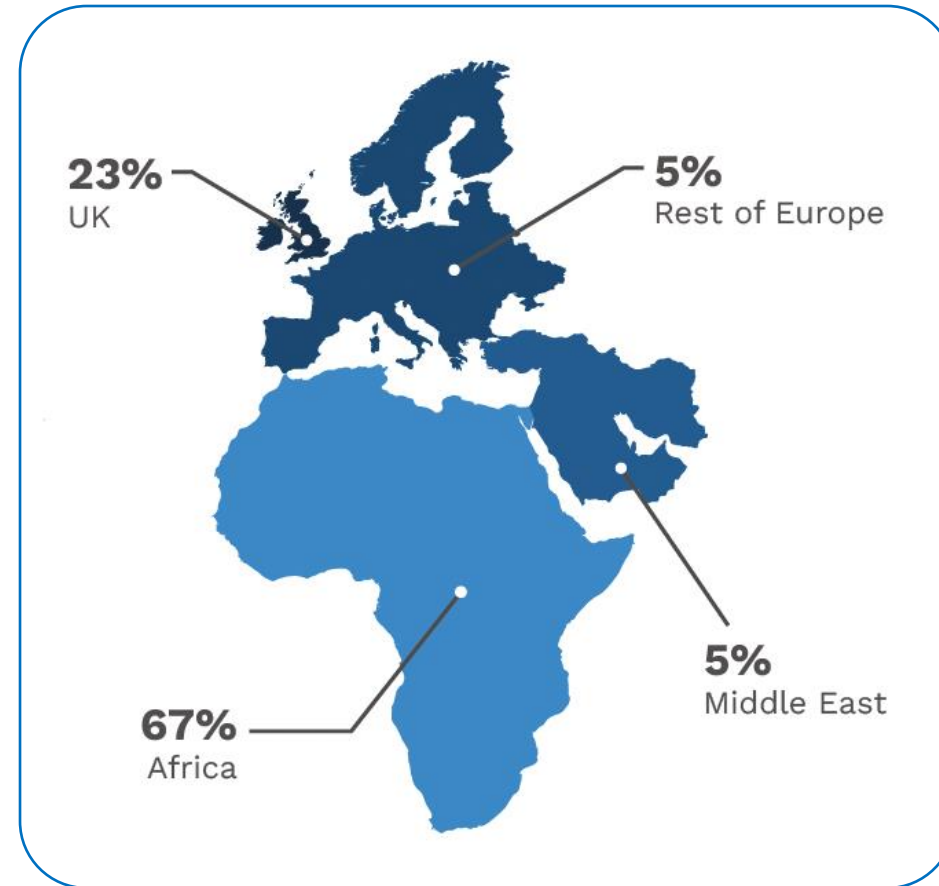
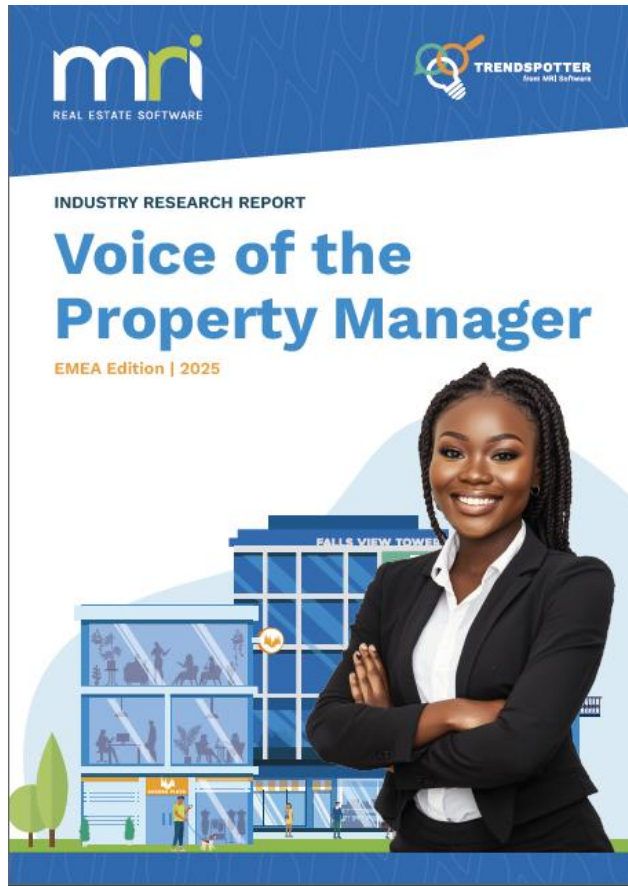
Today's agenda

1. Property Management
2. Facility Management
3. Built for Africa
4. From Pressure to Progress



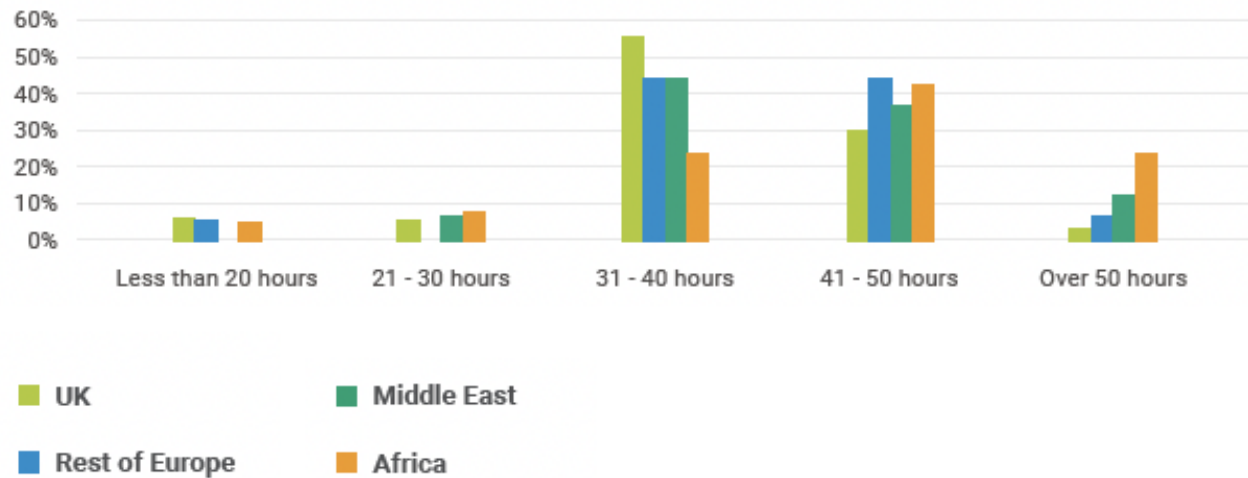
Property Management

Voice of the Property Manager 2025



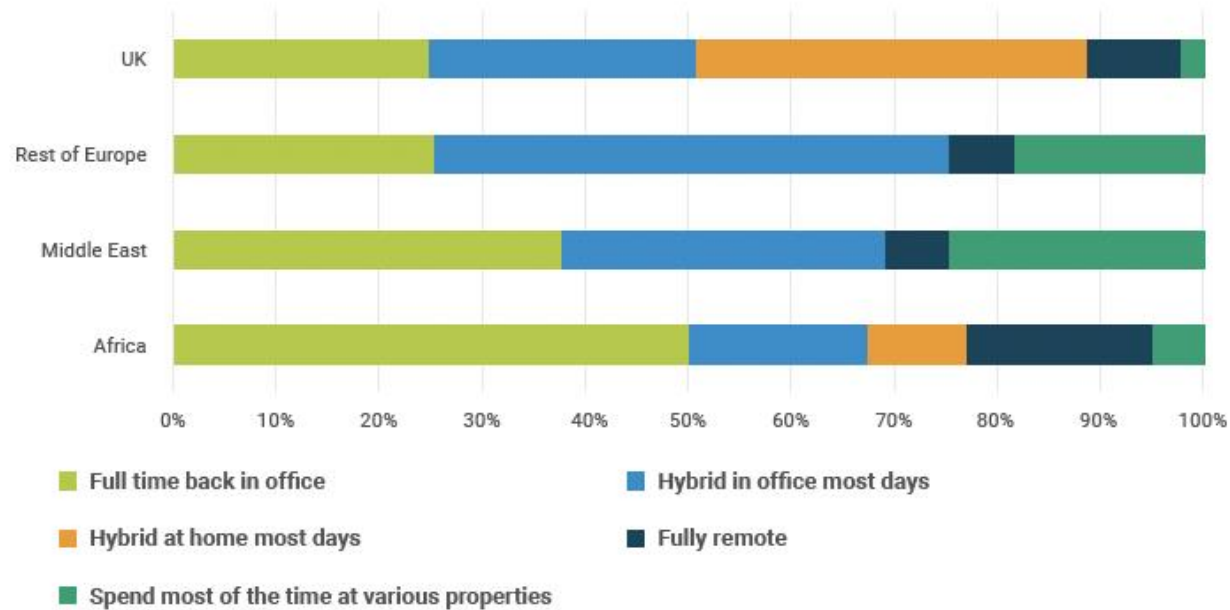
Longer Hours, Higher Commitment

How many hours per week do you work?



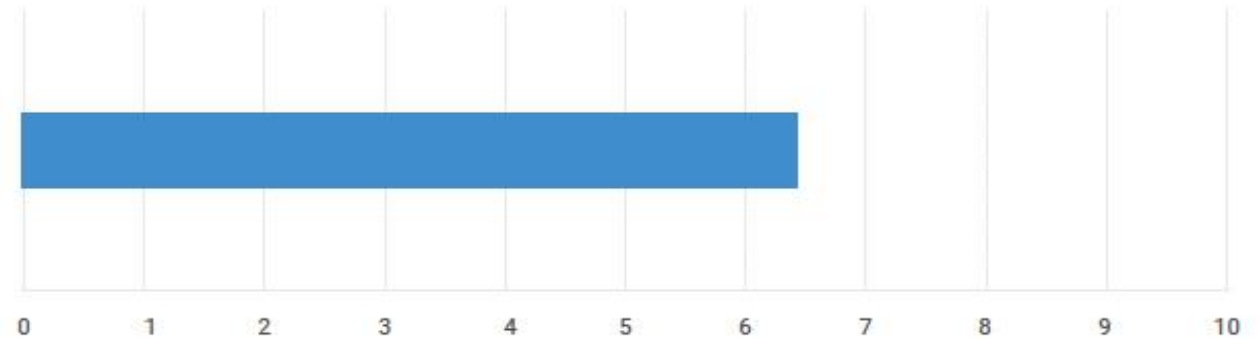
Longer Hours, Higher Commitment

What best describes your working environment?



Longer Hours, Higher Commitment

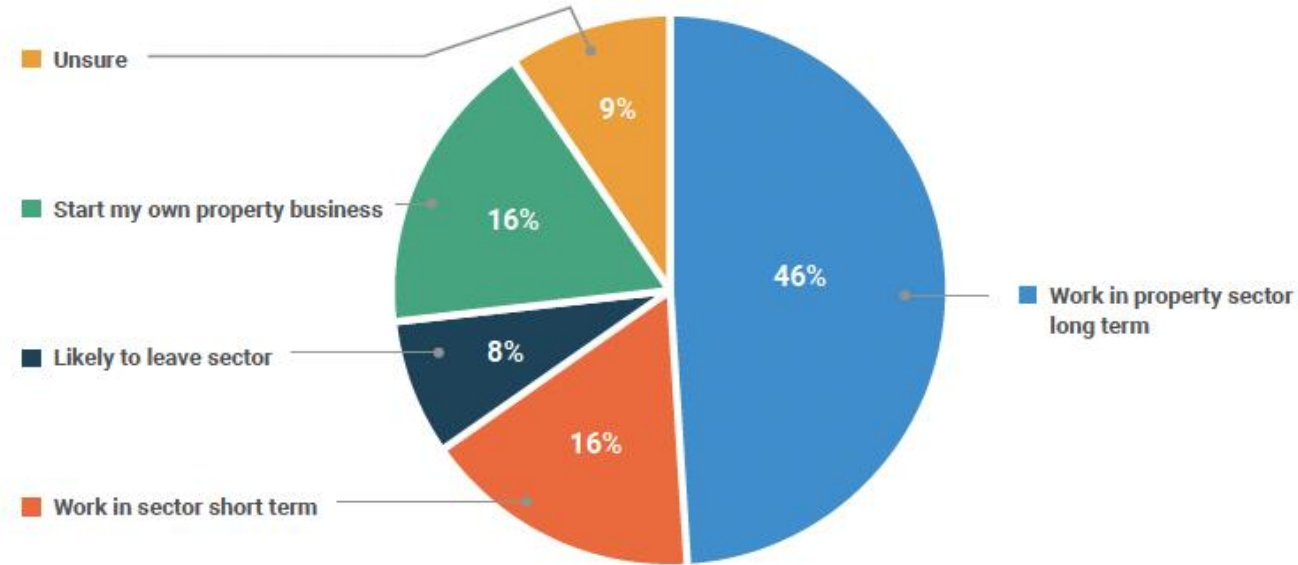
How likely is it that you would recommend working in property management to a friend or colleague?



(Scale of 1 to 10; 0 is not at all likely and 10 is extremely likely)

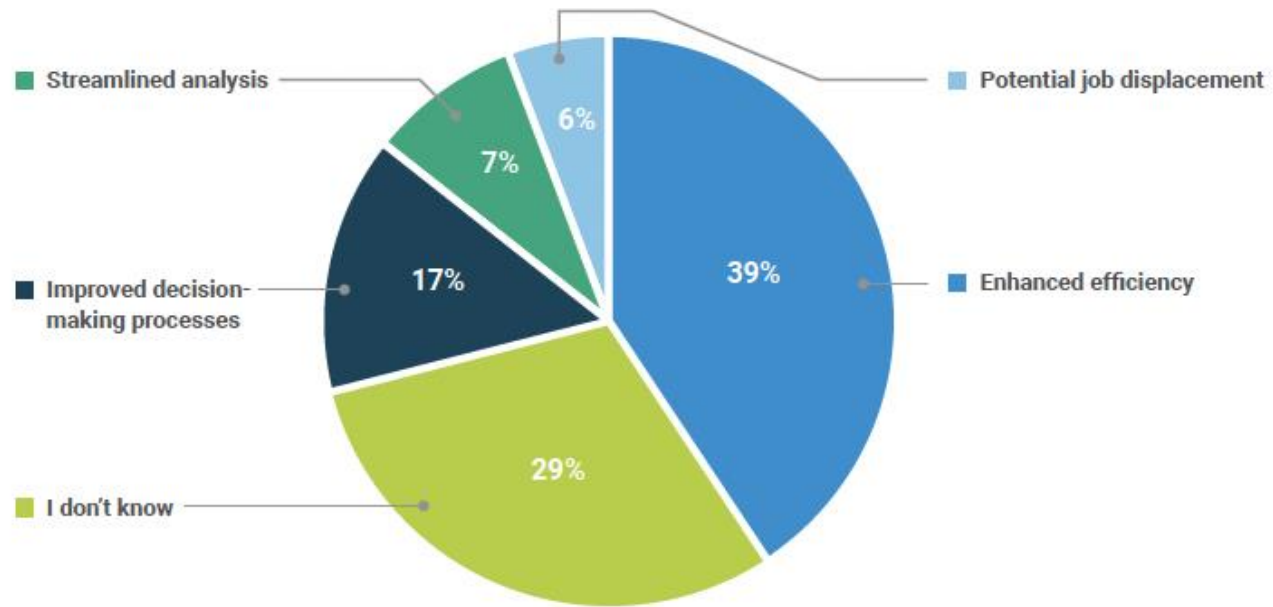
Entrepreneurial and Optimistic

What are your aspirations in your property career?



Entrepreneurial and Optimistic

What do you think the main impact of AI will be on your role?



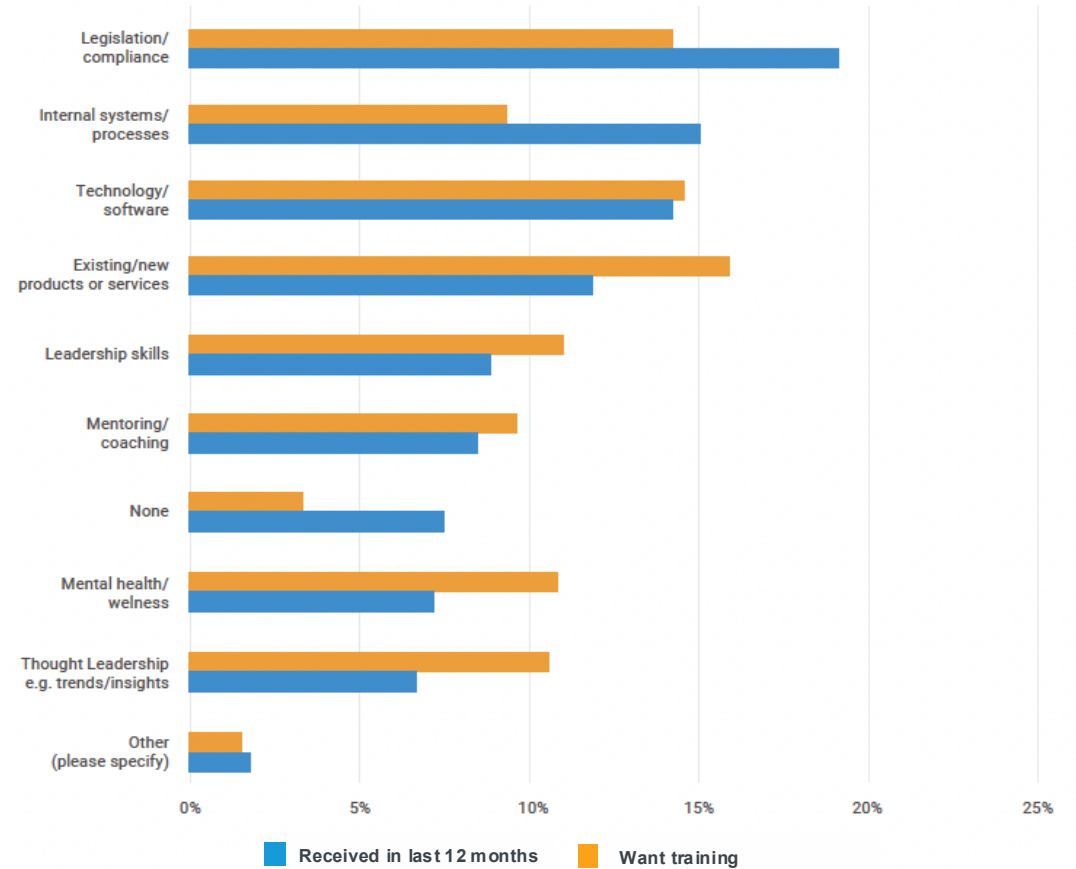
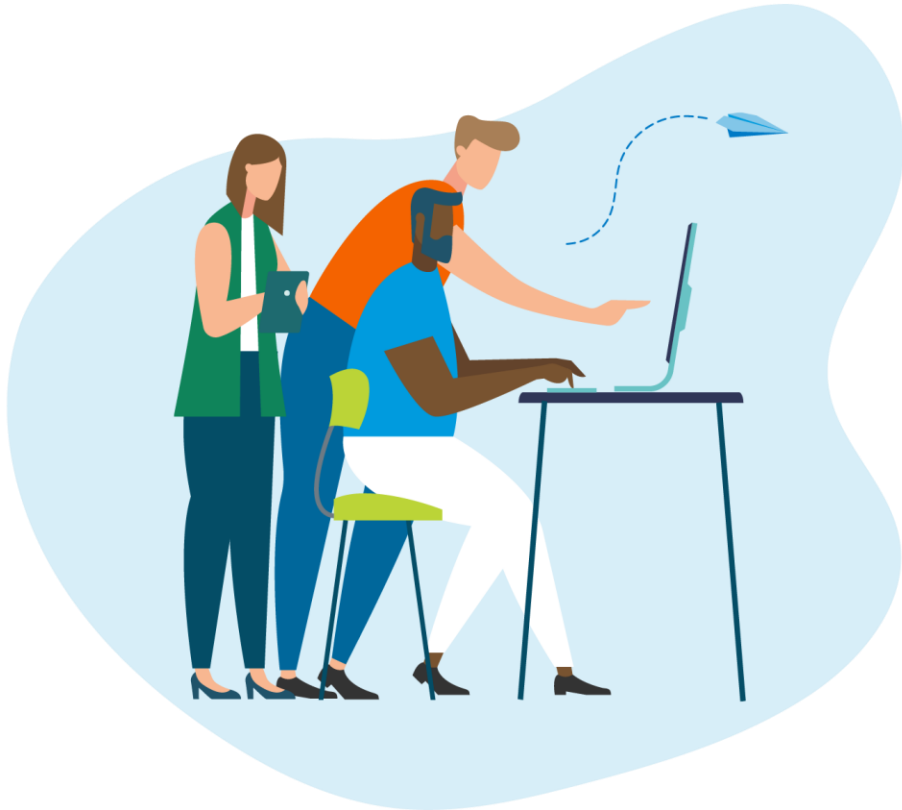
Barriers to Productivity

To what extent do you agree or disagree with the following...



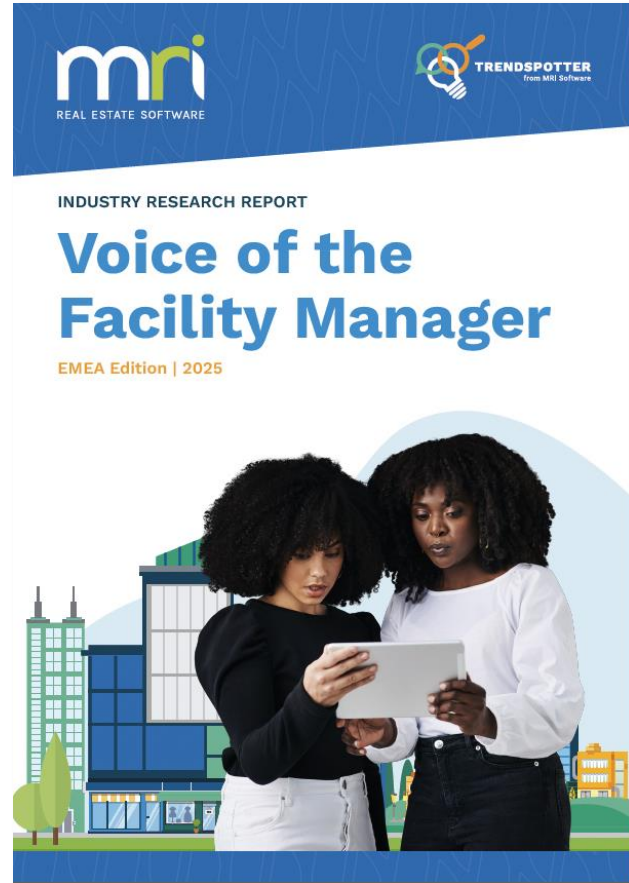
Barriers to Productivity

What training have you received in the last 12 months?



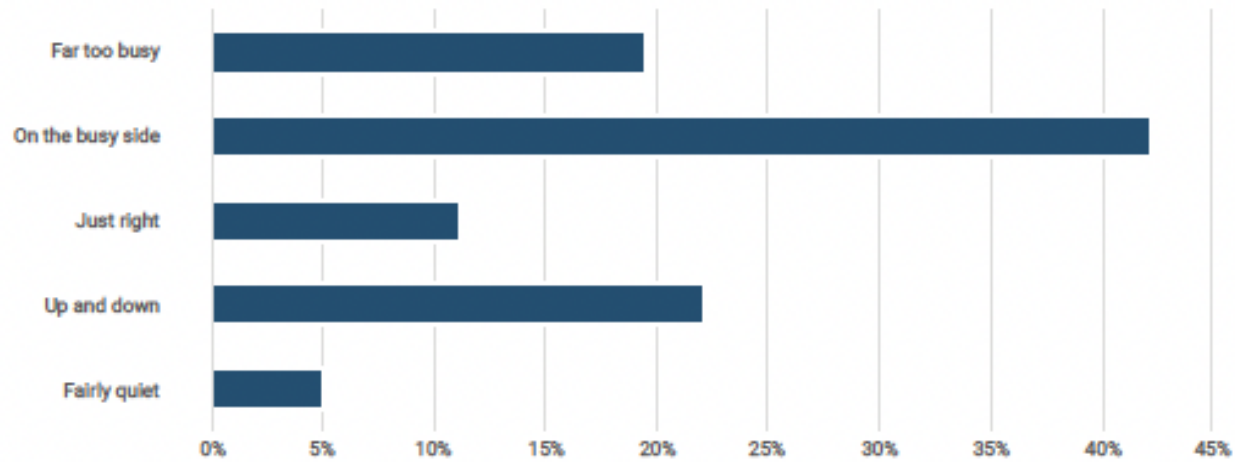
Facility Management

Voice of the Facility Manager 2025



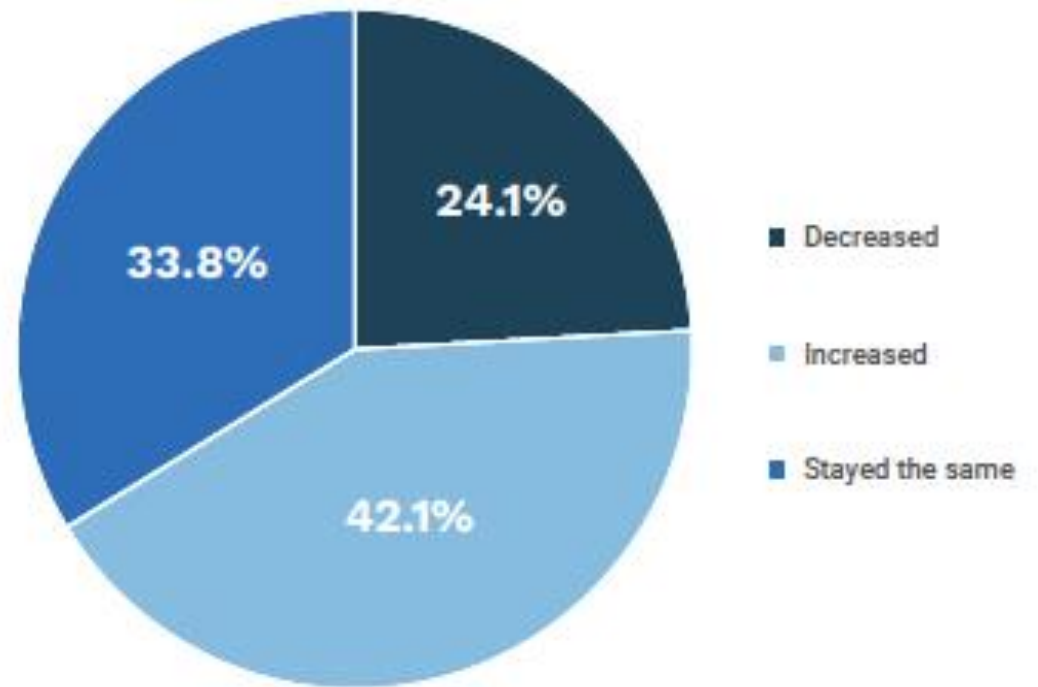
Rising Workloads

How would you describe your workload?



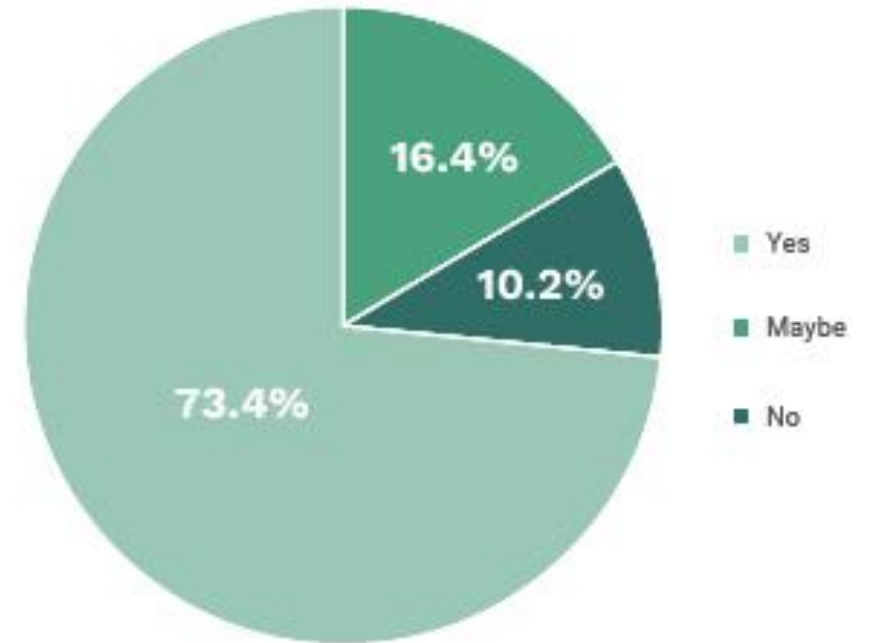
Rising Workloads

Has your facility management budget increased, decreased or roughly stayed the same over the last three years?



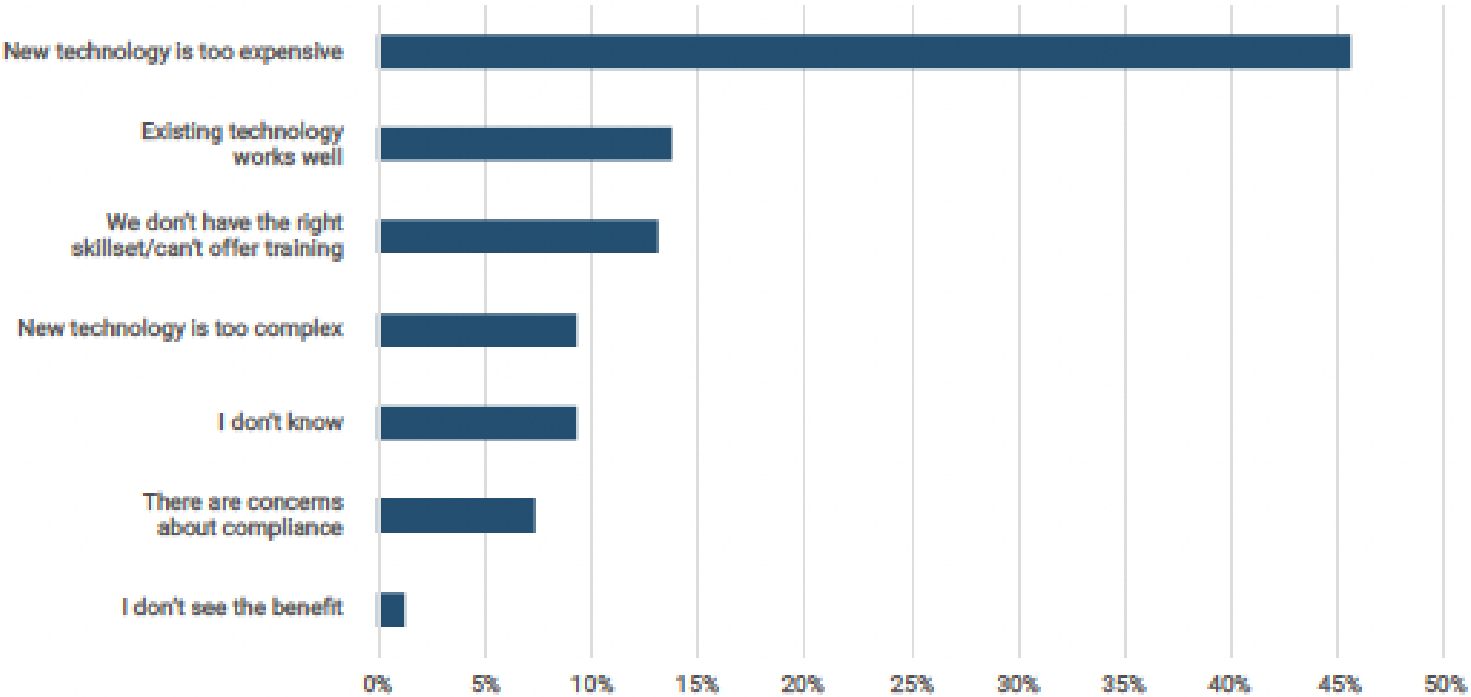
Rising Workloads

Do you see yourself working in facilities management in five years?



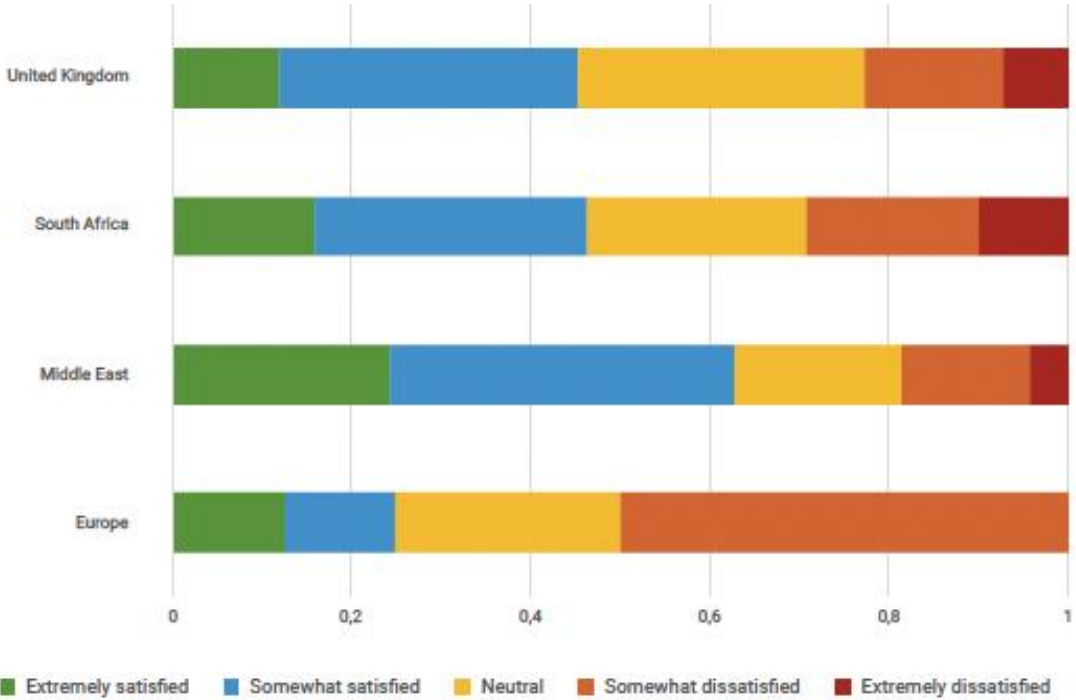
Investment in Tech is Overdue

What is the biggest challenge your organisation is likely to face when adopting new technology in the next 12-18 months?



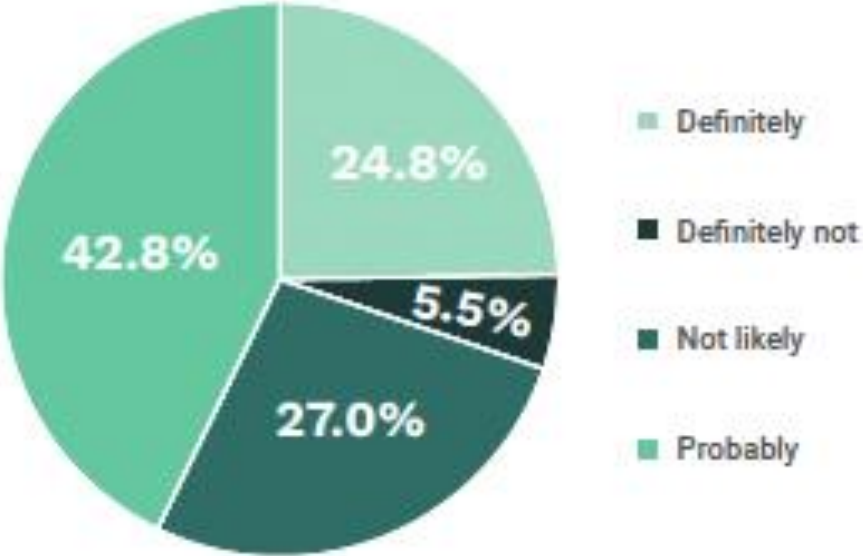
Investment in Tech is Overdue

How satisfied are you regarding the technology your team uses?



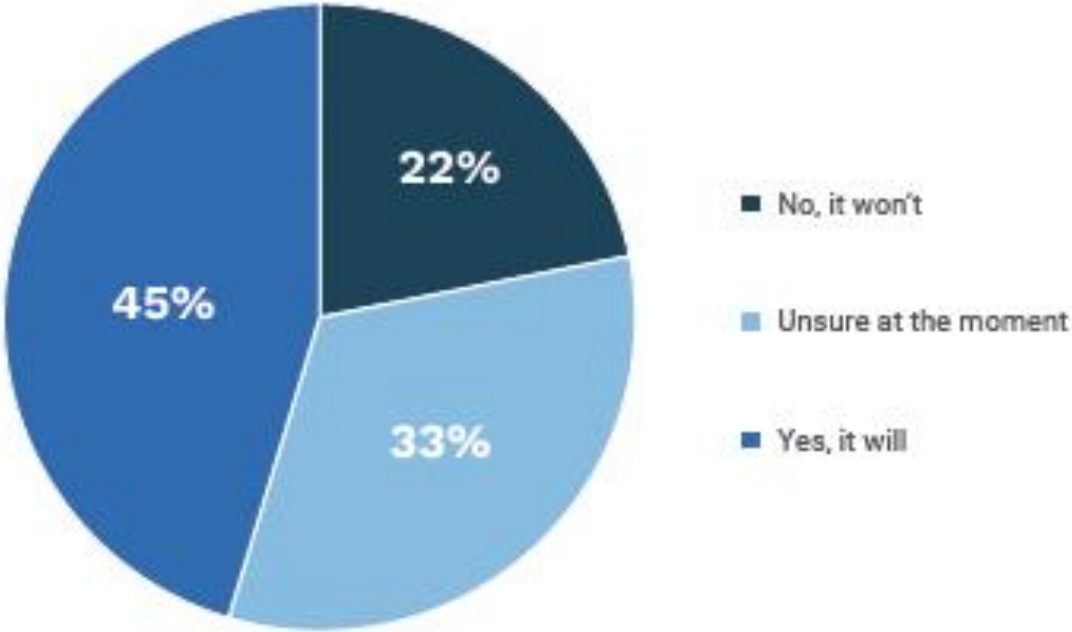
Investment in Tech is Overdue

Will your organisation adopt new facilities management technology in the next 12-18 months?



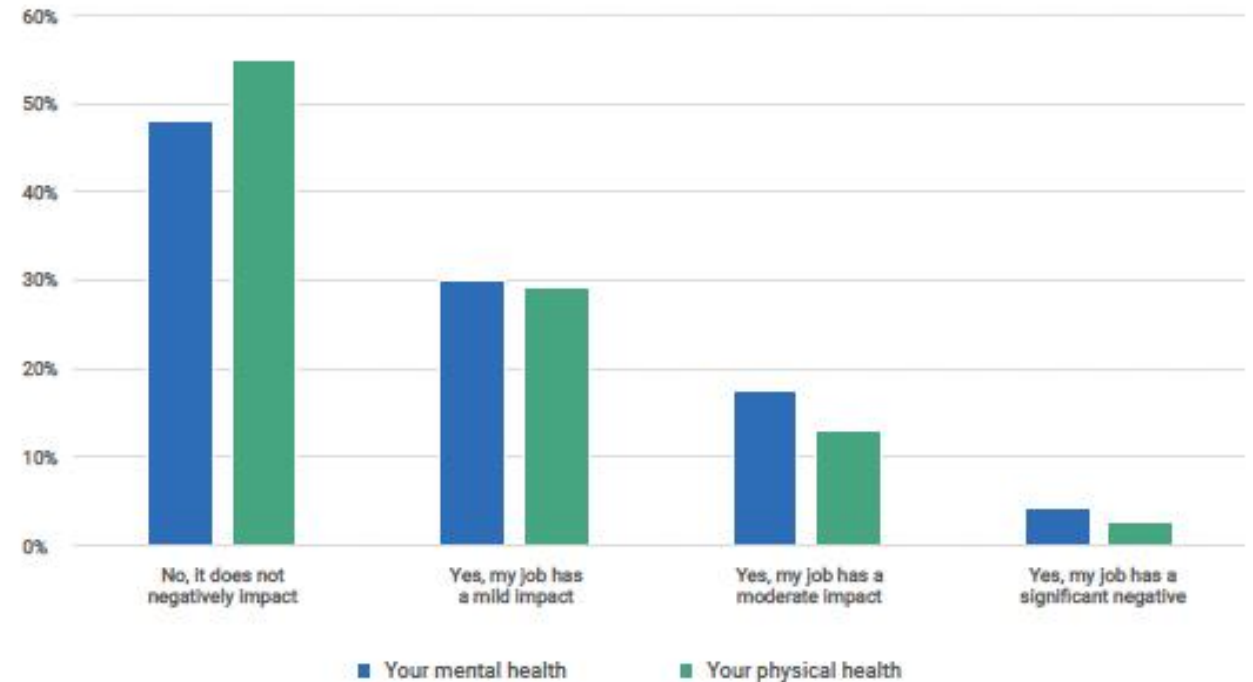
Investment in Tech is Overdue

If AI isn't integrated within your next update/release, will this influence you to implement new solutions that have built in AI capabilities?



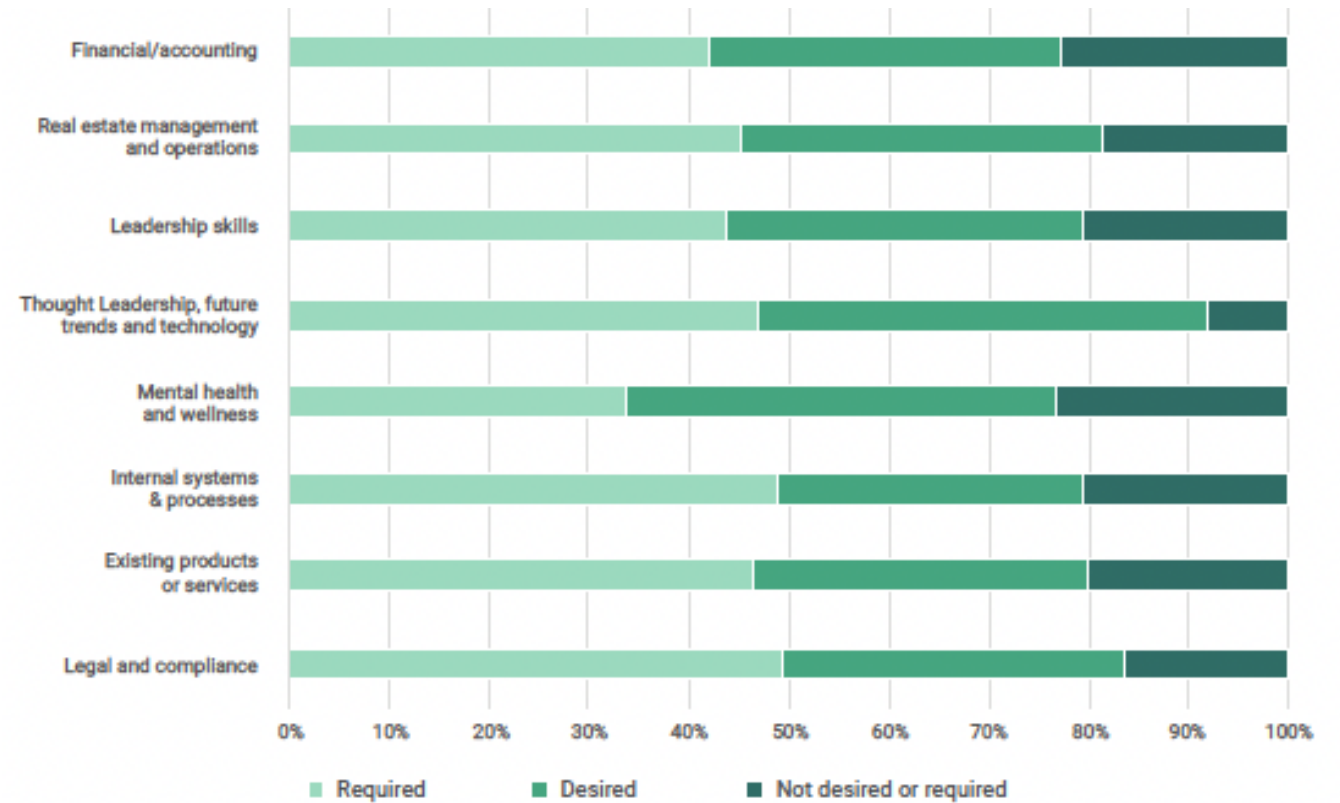
People Matter: Wellbeing & Training Gaps

Do you feel that your job negatively impacts your mental health?



People Matter: Wellbeing & Training Gaps

What type of training do you feel is desired/required over the next 12-18 months to ensure your organisation is setup for continued growth?



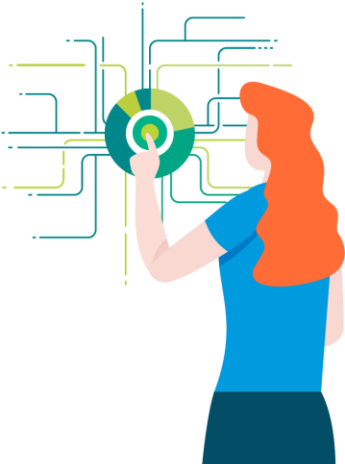
People Matter: Wellbeing & Training Gaps

Net-zero targets and environmental responsibility



Built for Africa

MRI Solutions



 **mri**
agora insights

Make smarter decisions with fewer clicks - spend less time searching for data, and more time acting on it.



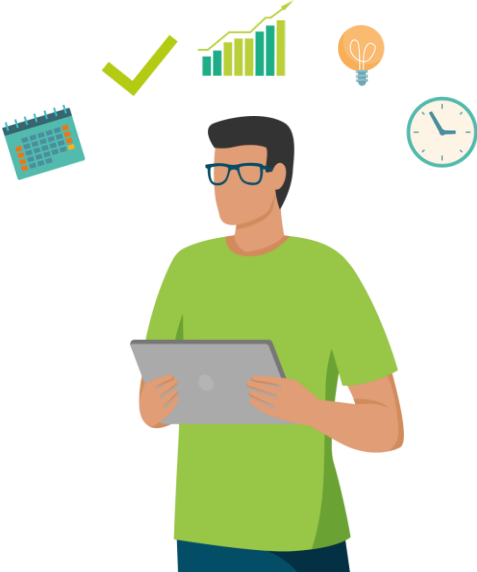
 **mri**
contract intelligence

Tackle contract challenges, extract key insights, and uncover opportunities to cut costs and boost revenue.



 **mri**
evolution

Gain complete oversight of your facilities, empower your workforce, and boost profit margins; all from a unified source of truth.

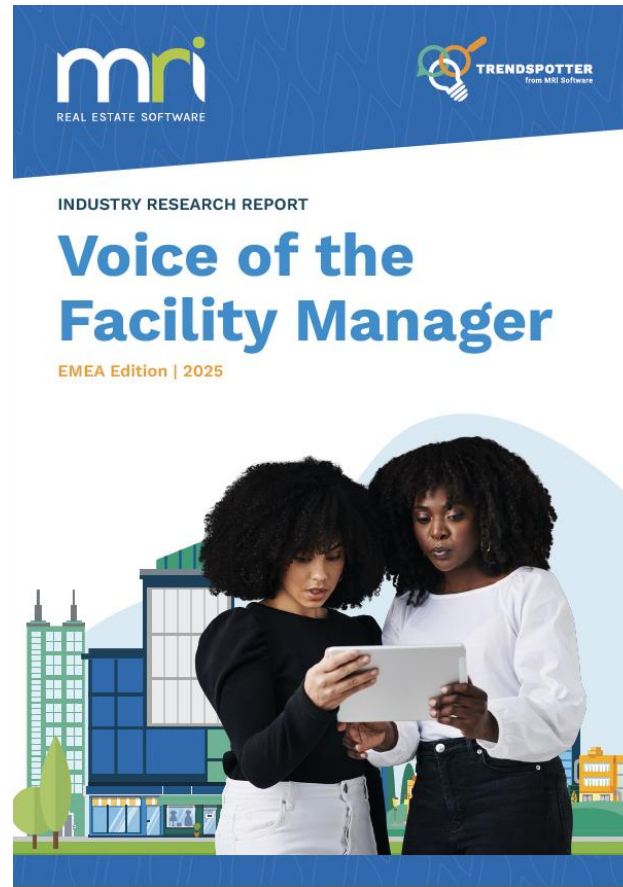
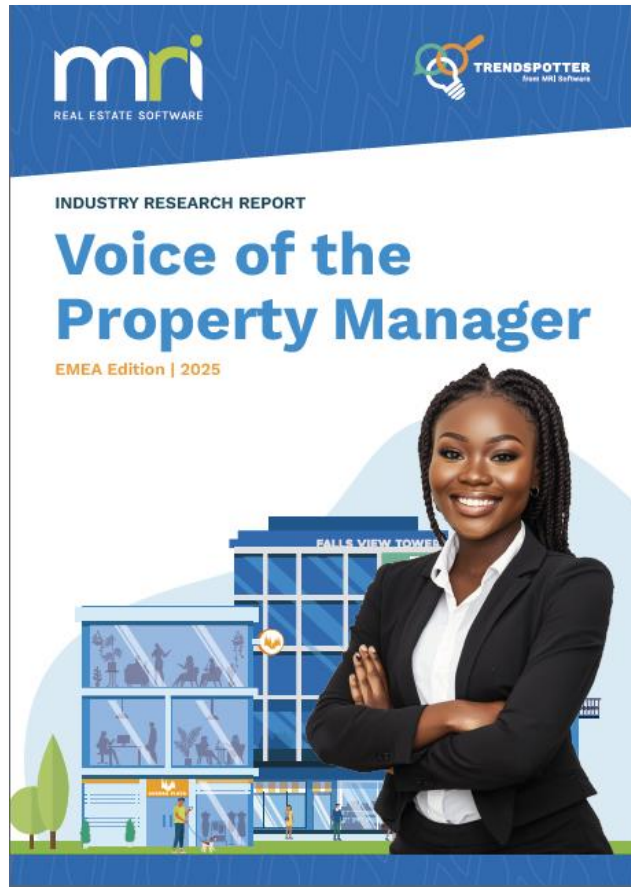


 **mri**
pmx

AI-powered real estate and finance technology built to manage the UK and Europe's most complex portfolios.

From Pressure to Progress

The Opportunity to Lead



[Access Here](#)



Get in touch

Scott Revell

Account Executive

scott.revell@mrisoftware.com

